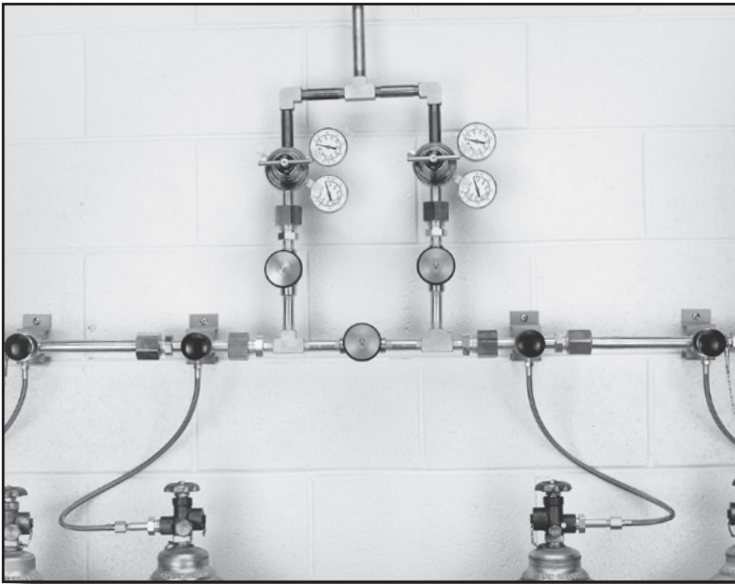


Gas Switchover Systems



634 Series AutoSwitch HF



The 634 Series Switchover provides a continuous supply of gas through 2 extra heavy-duty 6700 Series regulators. Line or station regulators should be installed at the point of use to ensure constant delivery pressure. Use of Acetylene requires flashback arrestor on pigtails. All fuel gases require flashback arrestors.

Advanced Features

- **Semi-Automatic Pressure Differential Switchover**
- **Integral 6700 Regulators**
High flow capacity
- **Pressure Ranges 0-15 to 0-200 PSIG**
Broad range of applications
- **Integral Maniflex Manifold System**
Easy installation and expansion
- **Left and Right Banks**
Maintain reserve supply

Applications

Pipeline Supply Source

200 PSIG delivery pressure meets NFPA guidelines without compromising flow capacity (15 PSIG maximum for Acetylene)

Fuel Gases

Safely supply acetylene and other fuel gases for cutting, heating or welding with OSHA regulation compliant manifold systems. Use of Acetylene requires flashback arrestor on pigtails. All fuel gases require flashback arrestors.

Materials

Delivery Regulator Bodies

Brass barstock

Delivery Regulator Bonnets

Forged Brass

Master Valves

Forged Brass

Diaphragms

Fabric-reinforced Neoprene

Internal Seals

PTFE ®

Seats

Viton®

Piping

Forged Brass

Specifications

Maximum Inlet Pressure

3000 PSIG (210 BAR)

Temperature Range

-40 to 140°F (-40 to 60°C)

Maximum Flow

6000 SCFH (2830 lpm)

Outlet Connection

½" FPT

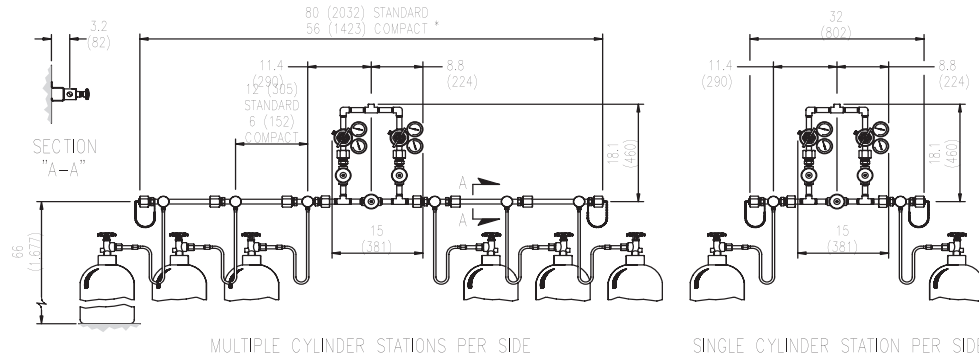
Weight

23 lbs. (10.4 kg)

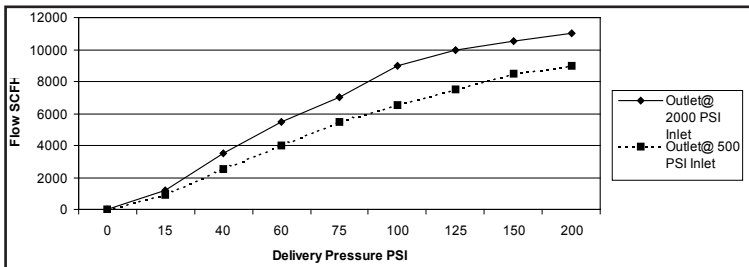
Gas Switchover Systems



Mounting and Dimensional Information for the 634 Series AutoSwitch HF



Flow Performance Curves for the 634 Series AutoSwitch HF



Ordering Information

Series	A Outlet Pressure	B Manifold Style	C Pigtail Style	D Stations/side	E -CGA	F
634					Inlet connection (if applicable) PTFE-lined	C: Foreign Inlets CO ₂ & Inert
	1: 0-15 PSIG	1: Standard Length (12" between stations) with One Cylinder/Station		1: One Station	pigtailed for oxygen service include accumulator extensions to prevent ignition from adiabatic compression. Not for use with Helium or Hydrogen.	F: Arrestor for 300, 410, 510
	2: 0-40 PSIG		2: 24" Rigid Copper	2: Two Stations		R: Foreign Inlets Ar, H ₂ , O ₂ , O ₂ Mix
	3: 0-120 PSIG	3: Standard Length (12" between stations) with 2 Cylinders/Station	3: 72" Flexible Stainless Steel Armor Case w/ Stainless Steel Core	3: Three Stations		
	4: 0-200 PSIG	4: Compact Length (6" between stations) with 1 Cylinder/Station	4: 24" Flexible Stainless Steel braided w/ PTFE® lining	4: Four Stations		
			5: 36" Flexible Stainless Steel Armor Case w/ Stainless Steel Core	5: Five Stations		
			6: 36" Flexible Stainless Steel braided w/ PTFE® lining	6: Six Stations		
			7: 24" Flexible Stainless Steel Armor Case w/ Stainless Steel Core	7: Seven Stations		
			8: 36" Rigid Brass w/ Flash Arrestor (CGA 300 & 510 Acetylene only)	8: Eight Stations		
			9: 72" Flexible Stainless Steel-braided w/ PTFE® lining	9: Nine Stations		

Related Options

Option	Order Number	Description
Manifold Floor Stand	830-7437	Supports 2 standard length (12") manifold extensions installed consecutively
Station Regulators	See page 40	Precise pressure delivery at the point of use
Flashback Arrestors	801-8530	Use of Acetylene requires flashback arrestors and pigtailed. Meets OSHA and NFPA Std. 51 requirements and complies with ISO 5175 (heavy class) DIN 8521, and BS 6158. See 44.